

How to trade RTB on IDEX

Connect the wallet

First step is to unlock or, in other words, connect your wallet to IDEX. Find “unlock wallet” tab in the top-right corner and click on it.

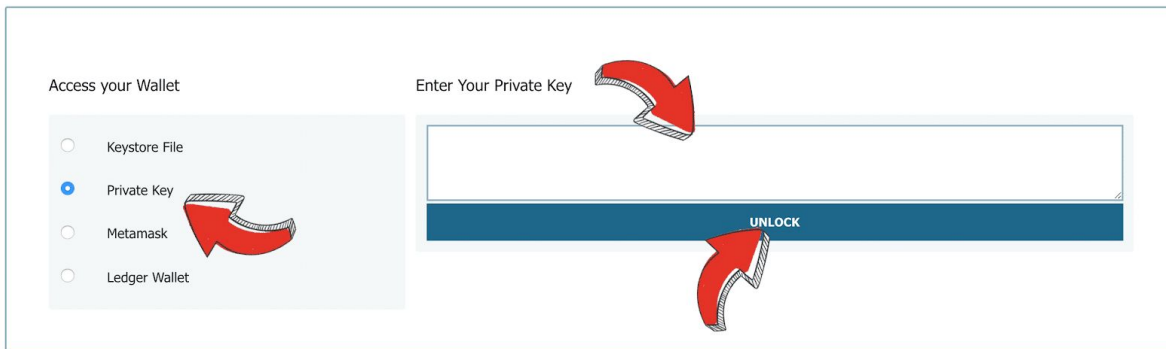
The screenshot shows the IDEX website interface. At the top right, there are navigation links: "EXCHANGE", "HELP", "NEW WALLET", and "UNLOCK WALLET". A red arrow points to the "UNLOCK WALLET" button. Below the navigation bar, there is a green banner with the text "Share in the success of IDEX and Aurora with the AURA staking token" and a "READ MORE" link. The main content area is divided into two sections. On the left, there is a "MARKETS" section with a search bar and a list of trading pairs. On the right, there is a "RTB / ETH" section with a table showing market data and a price chart.

ETH	DAI
☆ NPXS	0.0000067
☆ AUC	0.001435
☆ BAX	0.00000416
☆ MAN	0.00137353
☆ EOSDAC	0.00029899
☆ TOMO	0.00159
☆ EVE	0.00043691
☆ TFD	0.0000633
☆ CHP	0.00009757
☆ TAU	0.00032359
☆ AURA	0.00030177
☆ XDCE	0.0000097
☆ TRAC	0.00029013
☆ EXRN	0.00000013
☆ ESZ	0.000084

Last Price	24hr H	24hr L	24hr Change
0.00008	0.000081	0.00008	-1.2345679%

Choose “private key” and type it in the form. Press “unlock”

Unlock Wallet



Server Last Block: 5502496

© 2018 Aurora Labs S.A. [Telegram \(General\)](#) [Telegram \(Support\)](#) [Reddit](#) [Twitter](#)

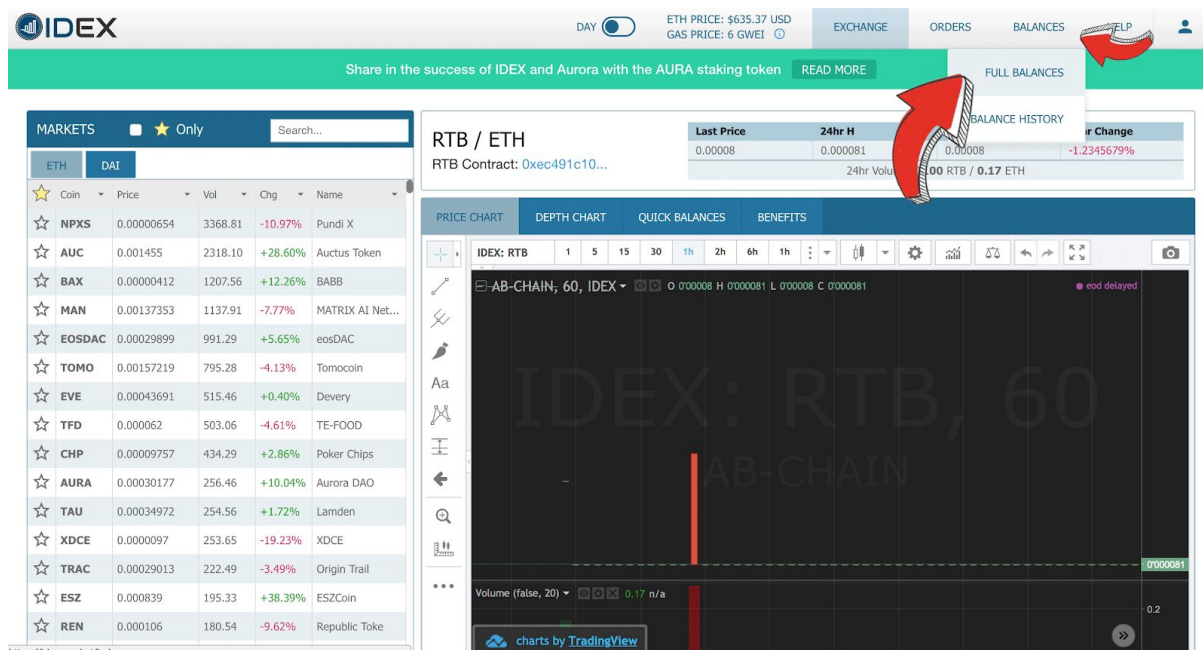
Help: [API](#) [Submit Token](#) [Contact](#) [FAQ](#) [Fees](#) [Guides](#)

About IDEX: [Terms of Service](#) [Privacy](#) [Whitenpaper](#)

If you are using MetaMask choose MetaMask and click “unlock MetaMask”. That’s it, that simple! Your wallet is now connected!

Deposit assets

In order to trade the tokens you first have to deposit them to the exchange. To do it hover over “balances” in the top navigation menu and select “full balances”.



Select “hide 0 balances”. Now you can see all assets in your wallet. Now find RTB and click the deposit button. Enter the amount you would like to deposit (pay attention to the minimum

amounts), choose your Gas Price (the more the price is, the faster the transaction will be processed).

IMPORTANT!

Remember that in order for the deposit transfer to be successful you need to have a little ETH in your wallet. The sum of ETH needed for the successful transaction will be indicated. We recommend to have at least 0.001 ETH on your wallet.

Confirm this transaction on IDEX via a pop up that will appear. Note that IDEX will ask you to make a confirmation 2 times. The first confirmation will confirm the transaction, while the second one will approve it.

If you are using MetaMask confirm the transaction from your wallet as well as on IDEX. You can now view your pending token deposit on a “balance history” page. Click on “balance history” tab under the “balances” tab found in the top navigation menu. Once the transaction is completed IDEX will notify you if it is successful!

Trade

Let's say you want to trade some of your ETH for RTB (before trading you need to deposit ETH using the example of RTB deposit described above). Go to ETH/RTB trading page: <https://idex.market/eth/rtb>

Find a sell order that you would like to purchase under “asks”. Click on it and press “buy”.

The screenshot shows the IDEX trading interface for ETH/RTB. On the left, there are sections for 'MY BALANCES', 'LIVE CHAT', and 'UPDATES'. The main area is split into 'BUY RTB' and 'SELL RTB' forms, both showing a total of 0 ETH. Below these forms are the 'ASKS' and 'BIDS' order books. The 'ASKS' table has a total of 30389.86316 RTB, and the 'BIDS' table has a total of 2.4452217 ETH. A red arrow points to the 'BUY' button, and another red arrow points to the 'ASKS' table.

Price	RTB	ETH	Sum(ETH)
0.00008400	1800	0.1512	0.1512
0.00008600	1750	0.1505	0.3017
0.00008900	1700	0.1513	0.453
0.00009900	1520	0.15048	0.60348
0.00010400	1500	0.156	0.75948
0.00011500	1310	0.15065	0.91013
0.00012500	1200	0.15	1.06013
0.00014000	1100	0.154	1.21413
0.00016500	916	0.15114	1.36527
0.00059000	2363	1.39417	2.75944
0.00060000	250	0.15	2.90944
0.00070000	3000	2.1	5.00944

Price	RTB	ETH	Sum(ETH)
0.00008000	2037	0.16296	0.16296
0.00007800	2000	0.156	0.31896
0.00007500	2000	0.15	0.46896
0.00007300	2100	0.1533	0.62226
0.00007100	2150	0.15265	0.77491
0.00007000	2200	0.154	0.92891
0.00006200	2500	0.155	1.08391
0.00005100	3000	0.153	1.23691
0.00004000	3750	0.15	1.38691
0.00003000	5000	0.15	1.53691
0.00002000	10000	0.2	1.73691
0.00001305	11494.32950192	0.150001	1.886911

If you are using MetaMask, the wallet will ask you to confirm the trade.

IDEX will notify you that the transaction is in progress and you will be able to check it under the “orders” tab in the top navigation menu by hovering over and clicking “trade history”. For further clarification click “status” to automatically bring out the etherscan page of a particular transaction.

Withdraw

To withdraw RTB from IDEX find RTB in “my balances” available from the “balances” tab in the top menu. Select “withdraw” and type in the desired amount. Click the “withdraw” button and confirm the transaction.

If you are using MetaMask you will be required to confirm the transaction in the wallet as well as on IDEX. The transfer is now being processed and your new RTB tokens are on the way to your wallet!